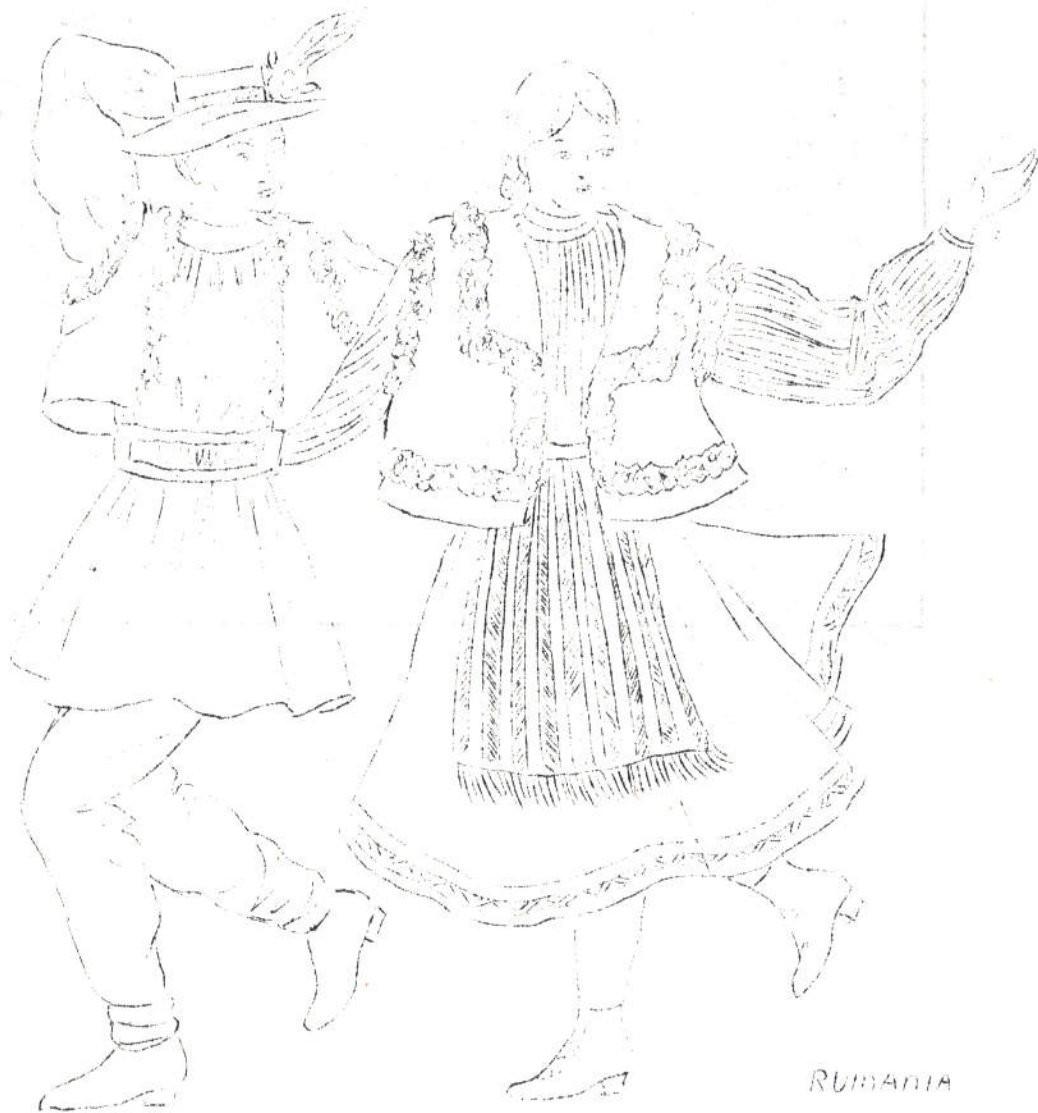


# S.I.F.D.

NEWS - NOVEMBER 1905



RUMANIA

It is with deep regret that we have to announce the very tragic death of Michael Lawrence, who will be remembered and mourned by many of our longer-standing members.

Mike was a longstanding member of the S.I.F.D. and Harrow Green Folk Dancing Group, as well as taking a leading part in the Linnea Group, Les Escargots, and Tanzgruppe Eidelweiss, and being one of the founder members of the Balkan Group. He will also be well-remembered as a teacher of Russian, Ukrainian, Israeli and German dances, and all of us who knew him will recall his helpfulness and understanding with beginners. He was a good teacher, a perfectionist in his own field of dances, as well as thoroughly enjoying each dance for itself.

He will be sadly missed, not only for his dancing ability but for the very sincere, respected, and very well-liked person that he was.

We send our deepest sympathy to his widow, Maria.



Are your Sundays quiet, rather dull, days? Do you feel that you'd like to round off the weekend with a pleasant evening out? If you are young enough and/or fit enough to spend an evening dancing for pleasure, then we have the very thing for you.

Come dancing at the DANCE CENTRE, 12 FLORAL STREET, LONDON W.C.2 on Sundays  
7 p.m. to 9.30 p.m.

Thanks to the good offices of Narendra Kotiyan, who found the Centre, we now have a brand new Centre for Sunday dances. When we say 'new', we mean just that. The building, in Floral Street, near Covent Garden Opera House, has been completely gutted and then rebuilt. This means that the whole building is clean and fresh; that the floors, as the toilet soap advertisements say "are smooth and lovely"; and also that facilities will be modern and certainly excellent. Two of the halls are about half the size of Cecil Sharp House, the third about the size of an average stage. There will be canteen facilities eventually. Not all the rebuilding is finished yet but it is hoped that all will be completed soon.

The Centre is just one street North of Covent Garden proper and one street South of Long Acre. Long Acre is one-way East to West and Floral Street is one-way West to East. If coming by car from Aldwych, approach is recommended up Drury Lane or Bow Street, along Long Acre, and turn left down Garrick Street, and park at that end of Floral Street. From the North, one would come down Monmouth Street from Shaftesbury Avenue, down Garrick Street, and park in Floral Street. The Centre is visible on the South side of the street with its square tower looming above its neighbours. Tube travellers would come via Leicester Square but Tottenham Court Road and Charing Cross are within reach. Holborn tube would take a little longer but is quite practicable.

We have become involved with the Dance Centre very early in its career. This, as Stephen Leacock says, is a "Good Thing". We are right in the middle of a new and expanding community of dancers and musicians. The future possibilities of the Society in this new central attractive series of halls are most promising.

---oOo---

BISHAM ABBEY, MARLOW, BUCKS.

January 14th to 16th, 1966.

Our annual visit to Bisham Abbey will take place after Christmas this winter. The programme will, as usual, include walking during the day and dancing in the evening. A large number of provisional bookings have already been made, so, if you would like to come, please notify :-

Prof. Jack Richardson,  
Dept. of Chemical Engineering,  
University College,  
SWANSEA

quickly. All bookings must be confirmed with a deposit of £1 by the 18th December. The cost of the weekend will be 52/6 (Friday dinner to Sunday tea) and no reduction can be made if you can come only for part of the weekend. It would be appreciated if the balance of the fee were sent before the weekend, so as to reduce the number of financial transactions necessary at Bisham!

NOMINATION FORM

I hereby nominate ..... to serve as

	*Chairman Secretary Treasurer Committee Member	on the Committee
--	---	------------------

for 1965/66.

Proposer.....  
 Seconder.....

I agree to serve in the above capacity if elected.....

\*Delete where not applicable.

Nominees, proposers, and seconders, must all be fully paid up members of the S.I.F.D.

Members have already received notification of the A.G.M. and have been asked to let the Secretary have nominations for the Committee by the 10th November. The above is a last reminder. If you wish to nominate anyone, please complete the above form and send it to the Secretary, 52 Banbury House, Banbury Road, London E.9, to reach her by the 10th.

---oOo---

CLASSES 1965/1966

At HUGH MYDDELTON SCHOOL, Corporation Row, Clerkenwell Green, E.C.1

1.	Monday	Spanish	Beginners	7.00-8.00	Mrs. Margaret Colato
2.	Monday	Spanish	Intermediate	8.00-9.30	Mrs. Margaret Colato
3.	Tuesday	Balkan	Beginners & Intermediate	6.30-8.30	Kenneth Ward
4.	Tuesday	Balkan	Advanced	8.30-9.30	Kenneth Ward
5.	Wednesday	International	Intermediate & Demonstration	7.30-9.30	Mrs. Margery Latham

At CHRISTOPHER HATTON SCHOOL, Laystall Street, Rosebery Avenue, E.C.1

*	Monday	International	1st Year	6.30-8.30	Mrs. Margery Latham
6.	Monday	Polish	Beginners	8.00-10.00	Miss Betty Harvey
7.	Thursday	Spanish	Advanced	7.00-8.00	Mrs. Margaret Colato
8.	Thursday	Spanish	Flamenco	8.00-9.30	Mrs. Margaret Colato

At CENTRAL CLUB, Y.W.C.A., Great Russell Street, W.C.1

9.	Friday	International	Advanced & Teachers' Course	7.30-9.30	Miss Kathleen Monroe James
----	--------	---------------	--------------------------------	-----------	----------------------------

\*This class is arranged by the G.L.C.

Light refreshments are available at all centres.

THINGS TO SEE AND DO

If you are in Manchester on Saturday, 27th November, then you'll have the chance of attending the

## MANCHESTER FOLK FESTIVAL

presented by the E.F.D.S.S. The list of performers looks most interesting.

----oOo----

Harrow Green Folk Dancing Group

Programme for November and December:

Nov. 3	Polish	Dec. 1	Israeli
10	Balkan	8	Balkan
17	Argentinian & Basque	15	Estonian
24	Swedish	22	Christmas Dance
		29	Hogmanay Dance

All at Holland Hall, Oxford House, Mape Street, off Bethnal Green Road, London E.2.

----oOo----

Hendon Folk Music Club present an INTERNATIONAL FOLK DANCE on Hallowe'en Night, Saturday, 30th October, at 7.30 p.m., at The Hendon College of Technology, The Burroughs, N.W.4., with The Folkmen Band, The Fielders Folk Group, plus a Caller for the American Square Dancing. Admission 5/- including light refreshment.

----oOo----

Come to the Christmas Dance Party at York Hall, Bethnal Green, E.2., on Friday, 10th December 1965, at 7.30 p.m. and pay 5/- admission to join the 'Dunav' Folk Band and the 'Moonrakers', plus the Folk Dance Band, for an evening of dancing, singing, and games. There will be a buffet and bar. Tickets from Harrow Green Committee or at the door.

----oOo----

As a member, it is your privilege to have your say in the affairs of the Society. Your opportunity will be at the ANNUAL GENERAL MEETING, on Saturday, 27th November, at 3 p at Hugh Myddelton School, Corporation Row, E.C.1. Following the meeting, there will be an INTERNATIONAL FOLK DANCE. Refreshments will be on sale at the school immediately following the meeting.

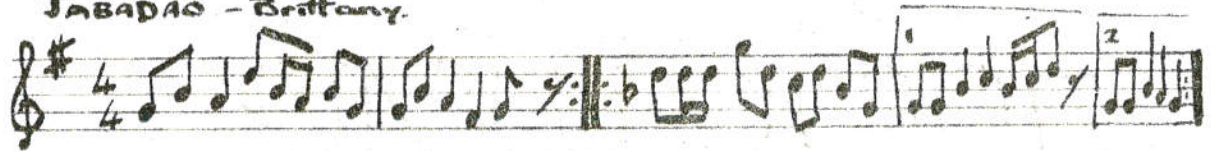
----oOo----

Come and join us for a weekend in beautiful surroundings at BISHAM ABBEY, MARLOW, from the 14th to 16th January 1966. Details on page 4.

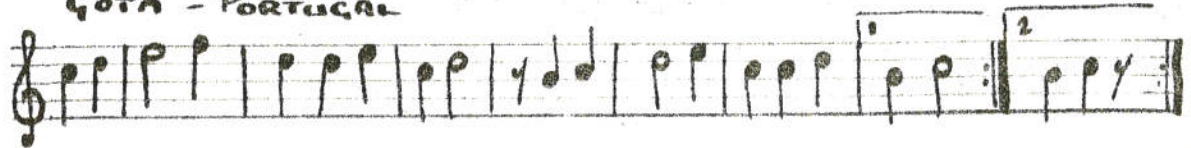
----oOo----

Since about last January, thanks to Ady Ongania's skill, we have had an instructive and attractive series of covers. Trying to complement these, we have been printing music of the same area as that portrayed on the cover. However, at the moment we have a lot of music that needs to be circulated and henceforth we are proposing to print, in no particular order, as much of our collection as possible.

JABADAO - Brittany



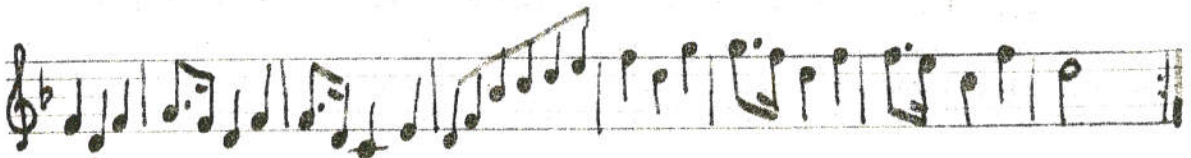
GOTA - PORTUGAL



DER LUSTIGE - Austrian



Kivi Kasukas - Estonian



Kugadi Kaagadi - Estonian Swing Dance



SOCIETY FOR INTERNATIONAL FOLK DANCING

presents

## FOLK WEAVE

A display of dances from many parts of the world.

At

COMMONWEALTH INSTITUTE  
Kensington High Street, London W.8., on

FRIDAY, 26TH NOVEMBER 1965

at 8.00 p.m.

Tickets 7/6 and 5/-

From: Miss K. Monroe James,      or      Miss Kay Modi,      or      Commonwealth Institute  
 14 Oakleigh Drive,                      34 Edith Road,  
 Croxley Green,                              London W.14  
 Rickmansworth, Herts.

---oOo---

The same Show will also be presented at:      RUTHERFORD SCHOOL, Penfold Street, W.2.

On Saturday, 20th November 1965, at 3 p.m.

Admission by programme 2/6.

Programmes from Miss K. Monroe James      -or-      Mr. Roland Minton

---oOo---

## Programme for November:

Sunday, 7th November - SPECIAL DANCE AT THE NEW DANCE CENTRE 7 to 9.30 p.m.  
 M.C. John Hughes. Musicians: Dunav Band, Wilf Horrocks, Cliff Beck.  
 Sunday 14th November - Dance Centre M.C. R. Minton Musician: Harry de Caux \*  
 Sunday 21st November - Dance Centre M.C. W. Horrocks " W. Horrocks  
 Sunday 28th November - Cecil Sharp House M.C. Bert Price\*

\*To be confirmed.

.....  
 Material for the next issue to be with the Editor or his Assistants by the 10th  
 November.

Editor: Ken Blackwood, 523 Commercial Road, E.1. Tel. STE 62374, MUS 3644 Ext. 796  
 Assistant Editors: Lily Southgate and Stephen Ward.